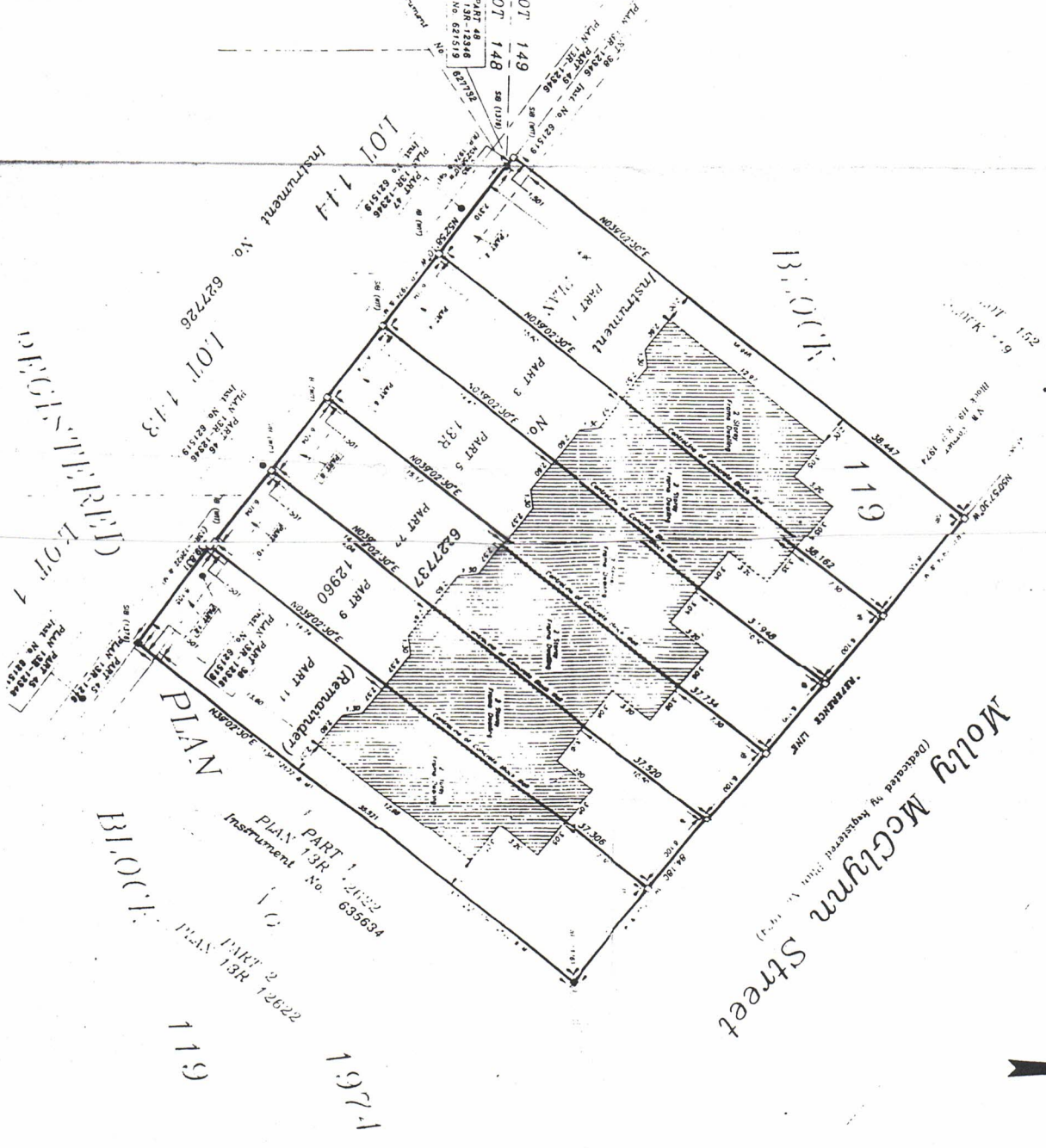


Surveyor's Report (PART 1)
 PLAN of PART of BLOCK 119, REGISTERED PLAN No. 1974
 TOWNSHIP of PITTSBURGH
 COUNTY of FRONTENAC
 SCALE=1:200

PETER S. HOPKINS LIMITED
 -1995-



ASSOCIATION OF ONTARIO
 LAND SURVEYORS
 No. 1015956

PART 2
 This Plan must be Read
 in Connection with the
 Survey Report.
 Date: OCTOBER 11, 1995.
 This Report was Prepared for
 V. MARQUE'S CONSTRUCTION LTD
 and the Undersigned accepts
 no Responsibility for use by
 Other Parties.

METRIC
 Distances Shown on This
 Plan are in Metres and
 can be Converted to Feet
 by Dividing by 0.3048

NOTES:

HEARINGS ARE ASTROMOMIC DERIVED FROM THE
 SOUTH WESTERN END OF MARY'S CROWN STREET
 PLAN No 1974 AND DESIGNATED HEREOF AS
 REFERENCE LINE.

LEGEND:

- denotes Planted Survey Monument
- S/IH Standard Iron Bar
- S/IH Sharp Standard Iron Bar
- I/B Iron Bar (found)
- R/B Rock Bar
- R/P Rock Post
- (R/P) Measured
- (R/P) Peter S Hopkins - O.L.S. (1376)
- (R/P) Registered Plan

PLANS TO BUILDINGS SHOWN HEREOF ARE TAKEN
 TO THE CONCRETE BLOCK FOUNDATION.

SURVEYOR'S CERTIFICATE:

I HEREBY CERTIFY THAT
 THE FIELD SURVEY REPRESENTED ON THIS PLAN WAS
 COMPLETED ON THE 28th DAY OF SEPTEMBER, 1995

PETER S. HOPKINS LIMITED

Peter S. Hopkins
 PETER S. HOPKINS - O.L.S.

OCTOBER 11, 1995

No person may copy, reproduce,
 distribute or alter this plan in
 whole or in part without the
 written permission of
 PETER S. HOPKINS - O.L.S.

This is Not
 an Original Copy
 Embossed with
 Seal

PETER S. HOPKINS Limited
 Ontario Land Surveyors

COPYRIGHT 1995