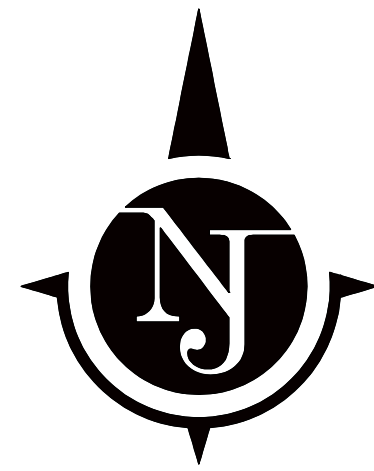


ASSOCIATION OF ONTARIO
LAND SURVEYORS
PLAN SUBMISSION FORM
2117930

THIS PLAN IS NOT VALID
UNLESS IT IS AN EMBOSSED
ORIGINAL COPY
ISSUED BY THE SURVEYOR
In accordance with
Regulation 1026, Section 29(3).



PLAN OF SURVEY
OF LOT 1
REGISTERED PLAN No. 1988
CITY OF KINGSTON
(GEOGRAPHIC TOWNSHIP OF PITTSBURGH)
COUNTY OF FRONTENAC
SCALE: 1 : 250

10m 5 0 15 metres

METRIC
DISTANCES & COORDINATES SHOWN ON THIS PLAN
ARE IN METRES AND CAN BE CONVERTED TO FEET
BY DIVIDING BY 0.3048

LESLIE M. HIGGINSON SURVEYING Ltd.
2020

THIS REPORT WAS PREPARED FOR
ZOLA MEHLOMAKULU & THE
UNDERSIGNED ACCEPTS NO RESPONSIBILITY
FOR USE BY OTHER PARTIES

SURVEYOR'S CERTIFICATE:

- I CERTIFY THAT:
- THIS SURVEY AND PLAN ARE CORRECT AND IN ACCORDANCE WITH THE SURVEYS ACT, THE SURVEYORS ACT, THE LAND TITLES ACT AND THE REGULATIONS MADE UNDER THEM.
 - THE SURVEY WAS COMPLETED ON THE 2ND DAY OF JULY, 2020.

LESLIE M. HIGGINSON SURVEYING Ltd.
ONTARIO LAND SURVEYOR
KINGSTON, ONTARIO

JULY 3, 2020
DATE _____
LESLIE M. HIGGINSON
ONTARIO LAND SURVEYOR

NOTE & LEGEND:

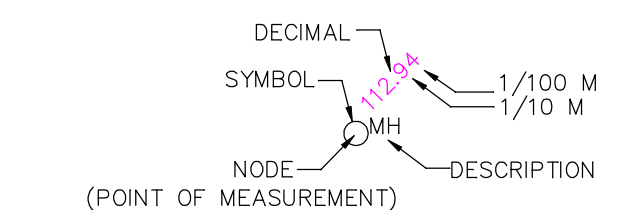
BEARINGS SHOWN HEREON ARE GRID BEARINGS DERIVED FROM GPS OBSERVATIONS USING REAL TIME NETWORK(RTN) BASE AND ROVER BASELINES AND ARE RELATED TO UTM ZONE 18, (75° WEST LONGITUDE) NAD83 (CSRS) (2010.0).

COMPARISONS SHOWN IN BRACKETS ARE TO ASTRONOMIC BEARINGS
ALL DISTANCES SHOWN HEREON ARE HORIZONTAL GROUND DISTANCES.

GRID DISTANCES CAN BE CALCULATED BY MULTIPLYING THE GROUND DISTANCES SHOWN ON THE PLAN BY THE COMBINED SCALE FACTOR OF 0.999733801.

SYMBOL	DENOTES	SURVEY MONUMENT PLANTED
□	"	SURVEY MONUMENT FOUND
SSIB	"	SHORT STANDARD IRON BAR
SIB	"	STANDARD IRON BAR
IB	"	IRON BAR
CP	"	CONTROL POINT
PB	"	PUBLIC BAR
WIT	"	WITNESS
S	"	SET
M	"	MEASURED
1376	"	PETER S .HOPKINS O.L.S
RP1	"	REGISTERED PLAN No. 1988
EP	"	EDGE OF PAVEMENT
CG	"	CURB & GUTTER
TS	"	TOP OF SLOPE
BS	"	BOTTOM OF SLOPE
D	"	DITCH
INV	"	CULVERT INVERT
HP	"	HYDRO POLE
OHTL	"	OVERHEAD HYDRO TRANSMISSION LINE
ANC	"	ANCHOR
CL	"	CENTRE LINE OF ROAD
SW	"	SIDEWALK
G	"	GROUND
φ	"	DIAMETER
N/W/E/W	"	NORTH/SOUTH/EAST/WEST
A/C	"	AIR CONDITIONER
LP	"	LIGHT POLE
BB	"	BELL BOX

SSIB'S WERE PLANTED WHERE OVERBURDEN WAS INSUFFICIENT TO SET SIB'S



THE POSITION OF THE UNDERGROUND SERVICES & STRUCTURES HAVE NOT BEEN ESTABLISHED IN THE FIELD.

NO PERSON MAY COPY, REPRODUCE, DISTRIBUTE OR ALTER THIS PLAN IN WHOLE OR IN PART WITHOUT THE WRITTEN PERMISSION OF LESLIE M. HIGGINSON SURVEYING Ltd..

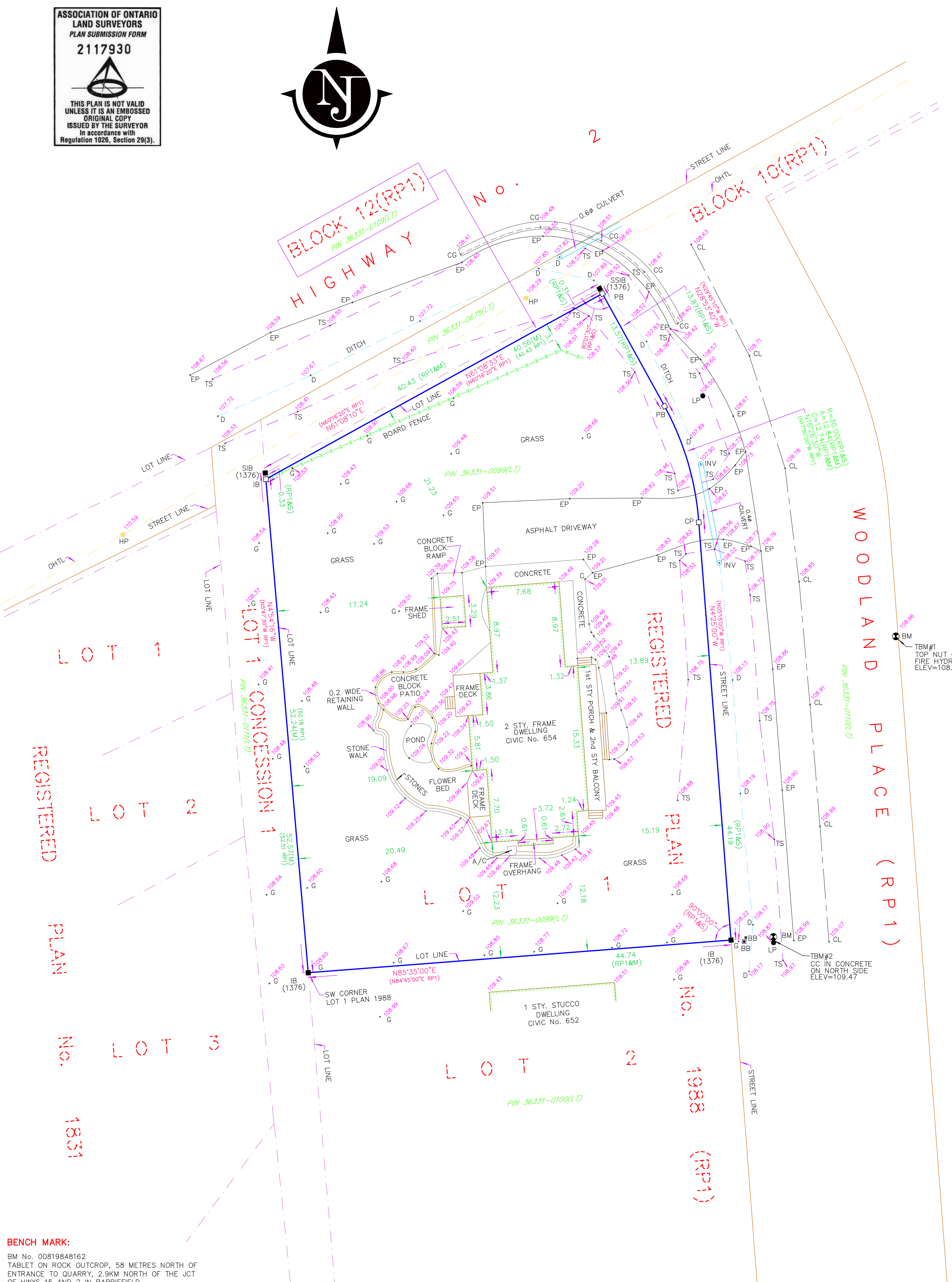
© COPYRIGHT
LESLIE M. HIGGINSON SURVEYING Ltd.
LESLIE M. HIGGINSON O.L.S. 2020

"THIS IS NOT AN ORIGINAL COPY UNLESS EMBOSSED WITH A SEAL"

DATED JULY 3, 2020

LESLIE M. HIGGINSON SURVEYING Ltd.
1064 GARDINERS ROAD
KINGSTON, ONTARIO K7P 1R7
(613) 389-7986 (FAX)389-5578 or leslie@mhhigginson.com

FILE: P\H RP1988-1 | 2020-0167GNDC POS



BENCH MARK:
BM No. 00819848162
TABLET ON ROCK OUTCROP, 58 METRES NORTH OF
ENTRANCE TO QUARRY, 2.9KM NORTH OF THE JCT
OF HWYS 15 AND 2 IN BARRIEFIELD
ELEV=99.612