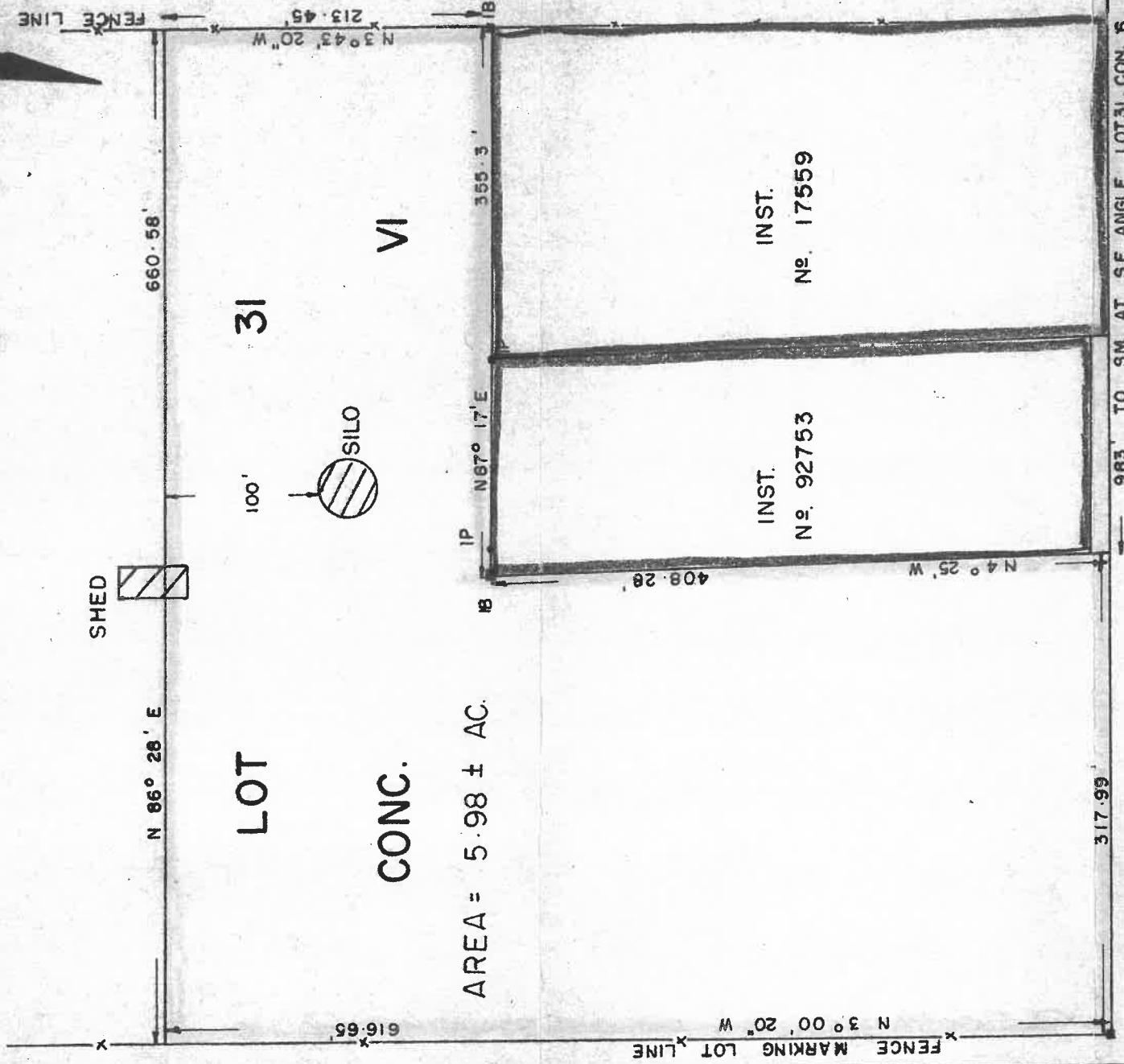
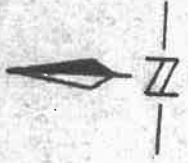


PLAN OF SURVEY
OF PART LOT 31, CONC. VI

TOWNSHIP OF KINGSTON
COUNTY OF FRONTENAC

SCALE 1" = 100'



AREA = 5.98 ± AC.

GLENBURNIE ROAD "CONC. ROAD BTWN.
CONC. V AND VI"

Donald Edward
FEB 22, 1966

SMITH AND SMITH
ONTARIO LAND SURVEYORS
83 CLARENCE STREET
KINGSTON, ONTARIO